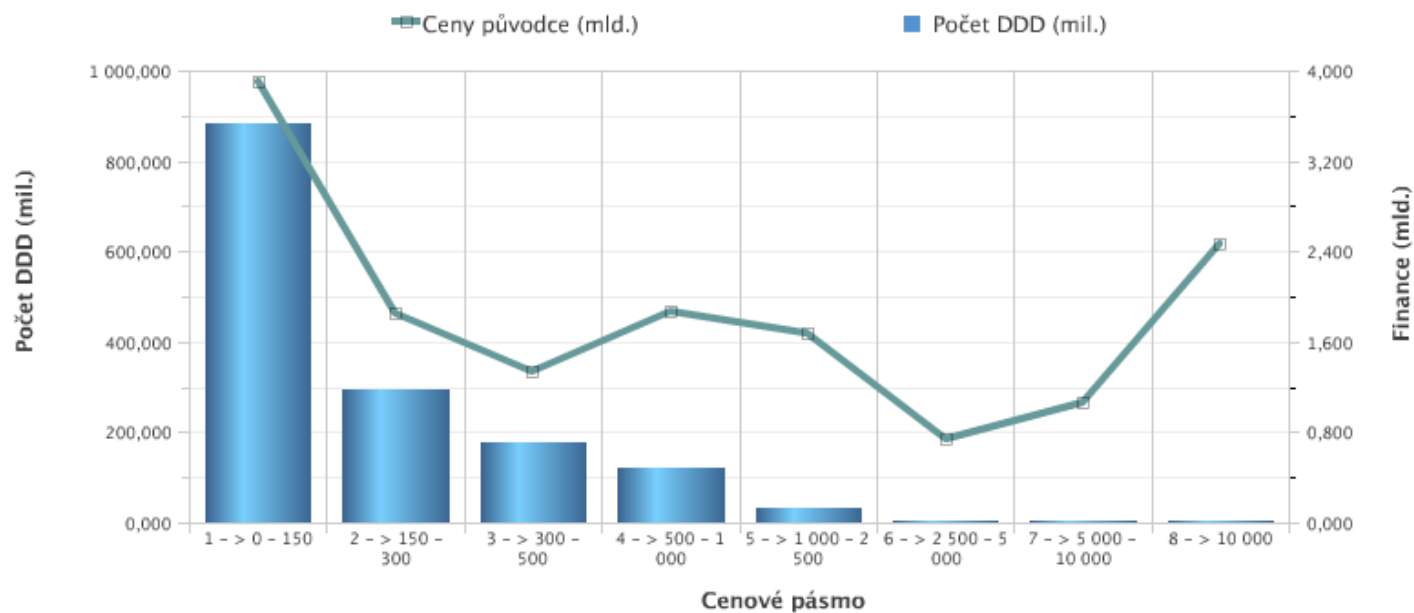


Období	Cenové pásmo	Ceny původce (mld.)	Počet DDD (mil.)
2011_1Q	1 -> 0 - 150	3,909	882,908
	2 -> 150 - 300	1,863	293,082
	3 -> 300 - 500	1,341	176,350
	4 -> 500 - 1 000	1,878	122,105
	5 -> 1 000 - 2 500	1,672	31,590
	6 -> 2 500 - 5 000	0,746	4,671
	7 -> 5 000 - 10 000	1,057	4,425
	8 -> 10 000	2,471	2,000



graf č. 1